

S. V. Sentinel

For Sale

This fine steam boat is in full working order and ready to go. It is unique because most of the major components were manufactured in BC over a period of about 120 years. The present owner has used his considerable engineering skills to assemble a boat that functions beautifully and he now wants to sell and move on to his next engineering project.

Power Plant

Full condensing engine manufactured by the Albion Iron Works, Victoria BC around 1890, engine serial number 440.

This engine has a 3 inch diameter high pressure cylinder, a 7.5inch low pressure cylinder and a 5 inch stroke. It weighs approximately 350lbs.

The engine has undergone a major refit by the present owner. The piston rods have been chromed, the

crankshaft has been machined and bearings adjusted. It has been fitted with a new high pressure valve and the low pressure valve has been rebuilt. The engine has new gaskets and packing all around.

The boiler was manufactured in Victoria by a pressure welder working under the supervision of Cliff Blackstaffe. It is a Roberts type water tube, with bent copper tubes and is very similar to the ones sold by Beckman Bros. It weighs approximately 800lbs.



The Hull

25.95 X 8.37 X 3.6 feet

Displacement approximately 5,000lbs.

Draft – 40' astern at the bottom of the skeg bar and 14" at the bow.

The 26' hull is based on a 54 man composite lifeboat, manufactured by Pelagic Construction in 1964 and used as a lifeboat aboard the Queen of Nanaimo Ferry. It was decommissioned in the mid 1970s and was purchased by Gord Edgar of Tsawassen, BC who fitted it with the current boiler and a single cylinder steam engine.

The hull was purchased by the present owner in 1985 who started a complete strip-down and rebuild. Stiffeners, floor and gunnel ribs were added to the hull and the single cylinder engine replaced with the current 2 cylinder compound engine.

Although the machinery is fully functional, the interior is unfinished. The cuddy has adequate room for a table for four, and a small galley. The cabin is constructed from 1" welded aluminum and the upper deck is capable of carrying 6 – 8 people.

The entire house is bolted to the gunwhales and can be lifted clear so that machinery can be removed. The engine can be removed through the port and starboard man doors without removing the house.



Configuration

The configuration is somewhat unusual, with the boiler astern and the engine amidships, but this allows one person to operate the engine and the helm. The boat ideally requires a crew of two, a helmsman and a fireman/deckhand.

Trailer

A new trailer, custom made for the hull, is included in the purchase. It has 4-wheel electric brakes and new tires. The boat is very easy to load and launch and the combination tows beautifully with a Ford F250.

Performance

The boat is driven by a 23" three blade propeller with a 30" pitch.

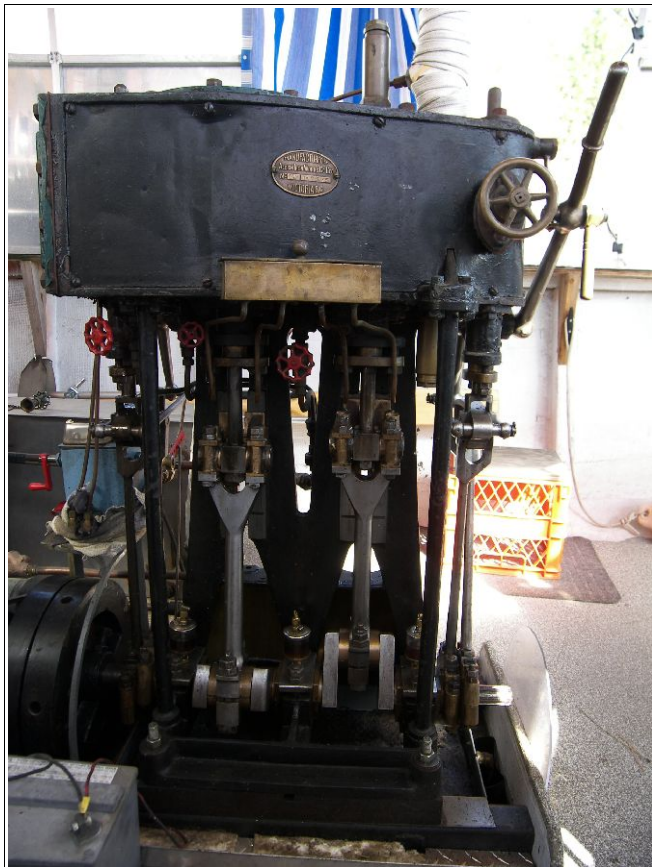
The average cruise speed is 5-6 mph with a maximum speed of 7.5 mph.

The boiler consumes four 2 X 4s (28" long) every 20 minutes, and the engine maintains 15 – 20" of vacuum on the low pressure cylinder and 60 – 70 psi on the boiler.

It's a very easy steamer, using one large wheel barrow of softwood lumber for 6 hours of running, including raising steam. The boat has been operating in its present configuration for 6 years, averaging about 5 runs/year, @ 4 – 6 hours per run.

The boiler consumes 5 gallons a day if the whistle is used frequently but it can be as low as 1 gallon if it isn't used.

The engine is very quiet, with no exhaust noise.



Accessories Included in the Purchase

Spare propeller, brass bilge pump (rebuilt but not installed), brass running and interior lights (run on oil), depth finder and VHF marine radio.

Located in Vernon, BC

Asking \$60,000 or nearest offer.

Contact David (250) 309-3440
or skyworksmedia@shaw.ca